



DEPARTMENT of the  
PRIME MINISTER and CABINET

*Te Tari o Te Pirimia me Te Komiti Matua*



Presentation for KNOMAD workshop 11 April 2017  
“Planned Relocation in the Context of Climate Change”

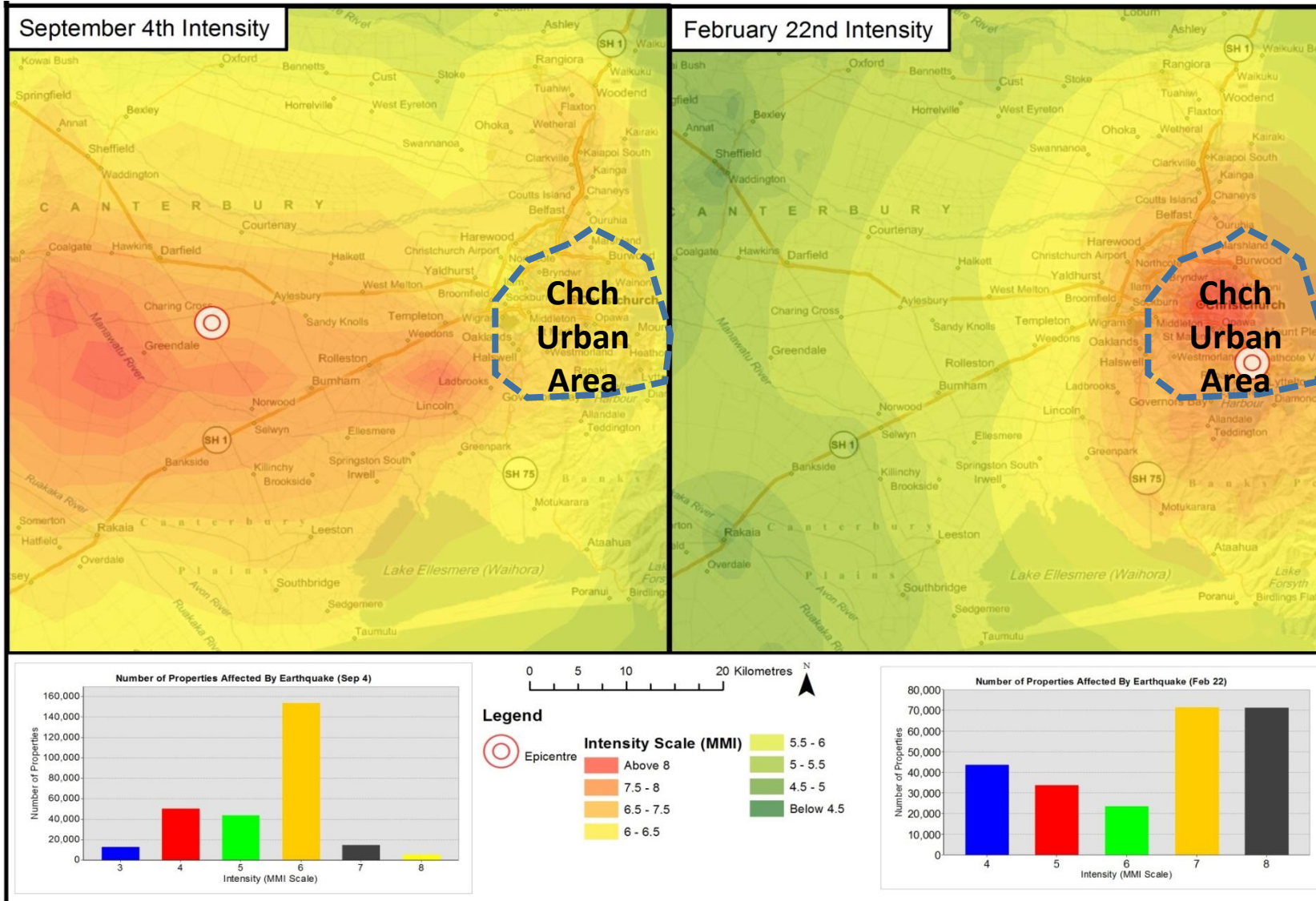
# Lessons from the Christchurch Earthquakes

Emma Jacka

Principal Advisor, Greater Christchurch Group

Department of the Prime Minister and Cabinet, New Zealand

# Shaking Intensity (MMI) Map



# Christchurch City 22 Feb 2011



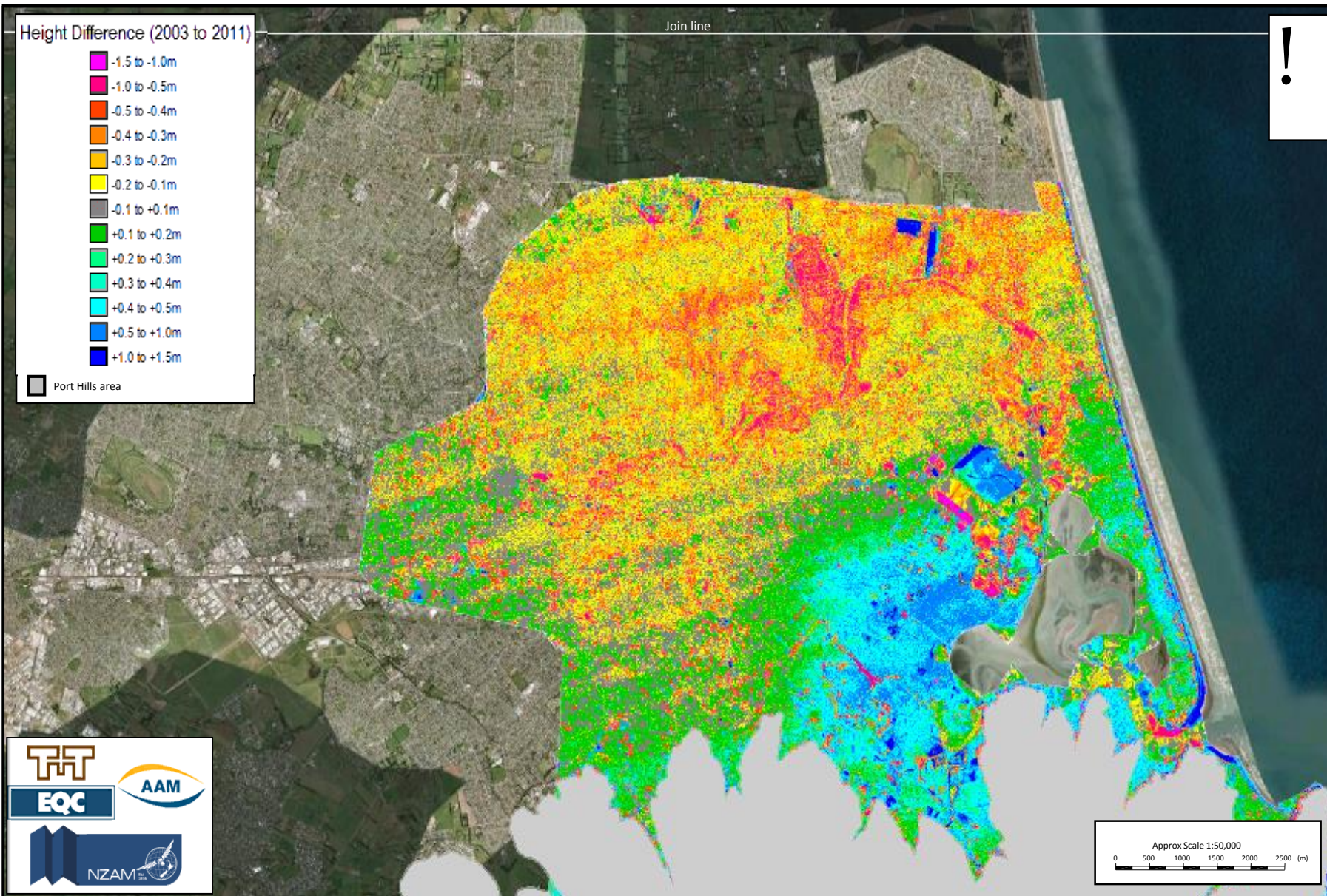
# The Canterbury Earthquake Recovery Act 2011

The Canterbury Earthquake Recovery Act 2011 provided the Chief Executive of CERA and the Minister for Canterbury Earthquake Recovery with specific powers to meet the purposes of the Act. Those purposes included to:

- provide appropriate measures that enable greater Christchurch and the councils and their communities to respond to, and recover from, the impacts of the Canterbury earthquakes;
- enable a focused, timely, and expedited recovery; and
- facilitate, coordinate and direct the planning, rebuilding, and recovery of affected communities, including the repair and rebuilding of land, infrastructure, and other property.

# Severe Liquefaction





Notes:  
 Low-resolution aerial photos sourced from Google Earth (Copyright: 2009).  
 High-resolution aerials provided by New Zealand Aerial Mapping (February 2011)  
 Property boundaries provided by Christchurch City Council  
 LiDAR data provided by AAM Pty Ltd Group (2003 and 2008) and New Zealand Aerial Mapping (March 2011)



DRAWN	
DRAFTING CHECKED	
APPROVED	
FILE :	
APPROX. SCALE (AT A3 SIZE)	
NTS	
PROJECT No.	

**CERA**  
 CANTERBURY EARTHQUAKE RECOVERY  
 Change in Ground Surface Elevation Between the  
 LiDAR Survey's of 2003 and March 2011

FIG. No. \_\_\_\_\_ REV. 0

# Liquefaction – Lateral Spreading



# Rock roll, cliff collapse and landslides





# Severe Liquefaction



# Lateral Spreading



# Rock fall damage



---

# NZ Government's Rebuild Objectives

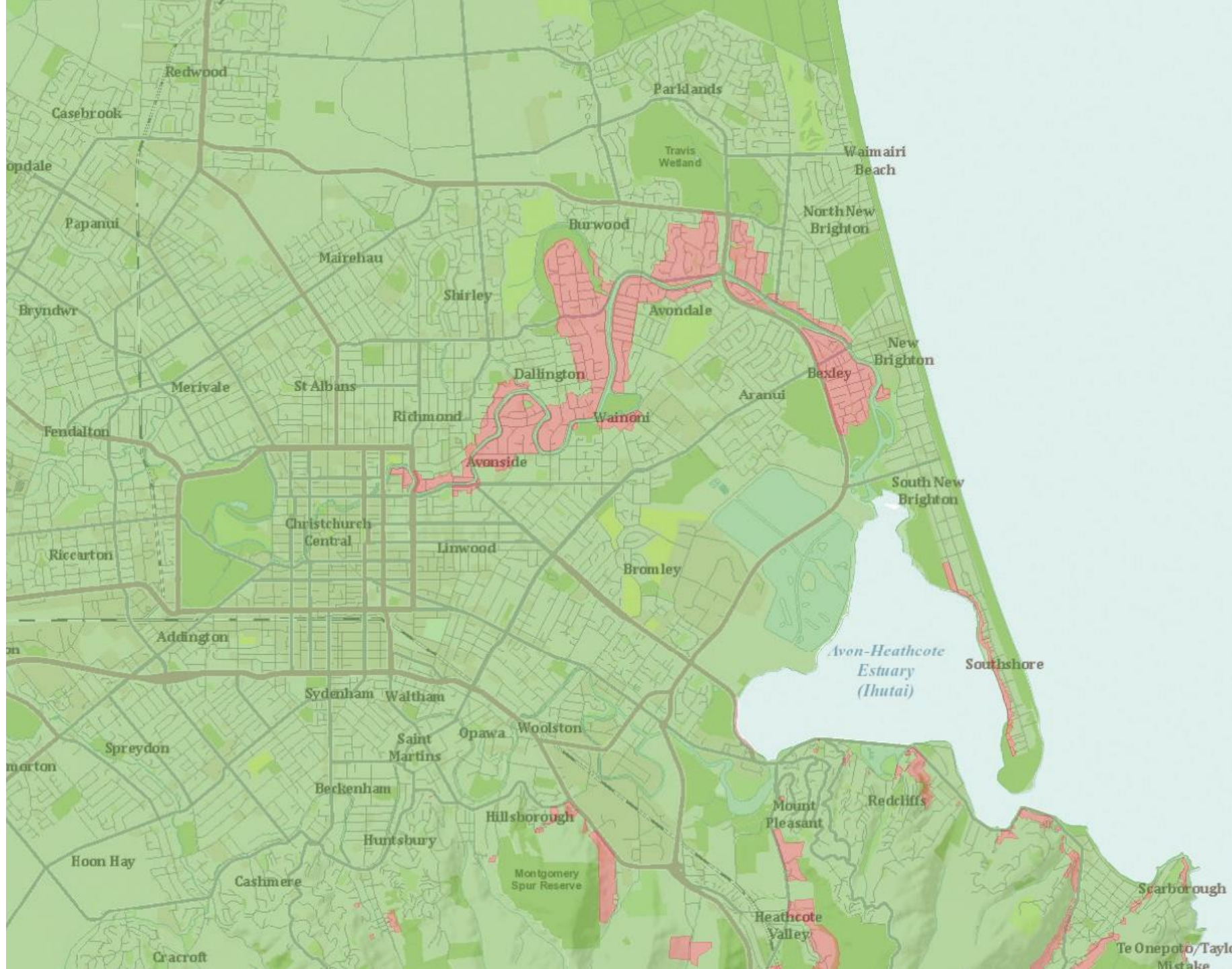
In considering options for assisting the worst affected residential property owners the Government agreed to the following rebuild objectives:

- Certainty of outcome for home-owners as soon as practicable;
- Create confidence for people to be able to move forward with their lives;
- Creating confidence in decision making processes (for home-owners, business-owners, insurers and investors);
- Using the best available information to inform decisions;
- Having a simple process in order to provide clarity and support for land-owners, residents, and businesses in those areas.

---

# Policy Response

1. CERA land zoning –a process for categorising properties as residential green zone or red zone based on how much land damage the earthquakes had caused in particular areas and whether it was realistic and cost-effective to remediate that damage
2. Crown offer –a voluntary offer to owners of insured residential properties in the residential red zone that would allow them to sell up and move on with their lives.



Source: CERA

# Implementation



CERA community meeting 2011

- People centered engagement approach

“Relocation after disaster: Engaging with insured residential property owners in Greater Christchurch’s land-damaged ‘Residential Red Zone’”

- Michelle Mitchell 2015

# The red zones today



[www.regeneratechristchurch.nz](http://www.regeneratechristchurch.nz)

[www.eqrecoverylearning.org](http://www.eqrecoverylearning.org)





DEPARTMENT *of the*  
PRIME MINISTER *and* CABINET

*Te Tari o Te Pirimia me Te Komiti Matua*

# Questions