

PLANNING PREVENTIVE RESETTLEMENT IN CAP-HAÏTIEN, HAÏTI

SESSION 263 - INVOLUNTARY RESETTLEMENT:
RESPONSES TO EXTREME WEATHER AND
ADAPTATION TO CLIMATE CHANGE



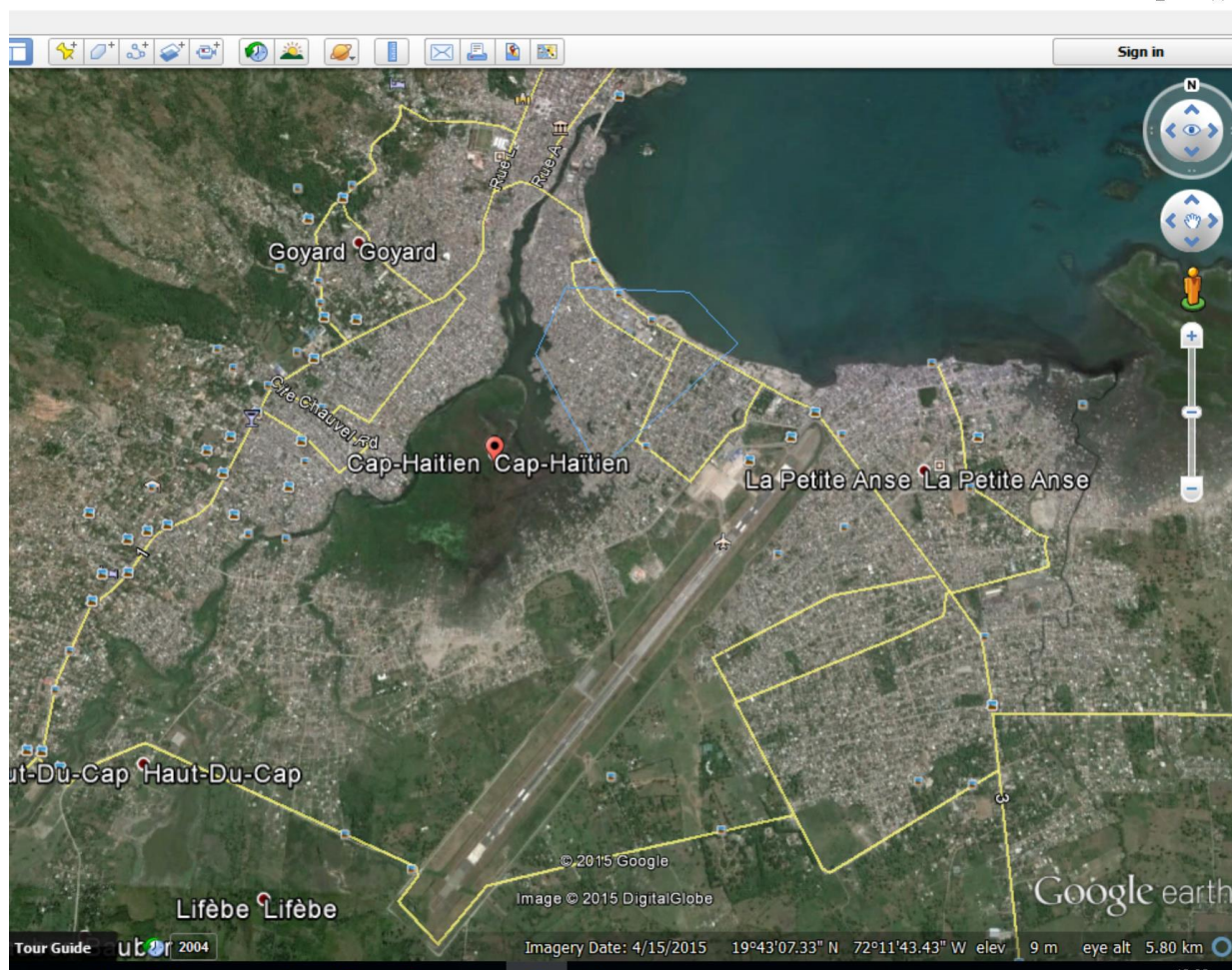
Presentation by Vincent Roquet,
Sr. Social Development Specialist,
Global Programs Unit, GSURR,
at IAIA17 in Montreal, April 4, 2017

Presentation Overview

- ❑ Flood management context in Cap-Haitien
- ❑ Urban slum clearance in Bassin Rhodo outlet
- ❑ Concluding comments

Cap-Haitien: Flood management context in Cap-Haitien

Cap-Haitien – View from the air



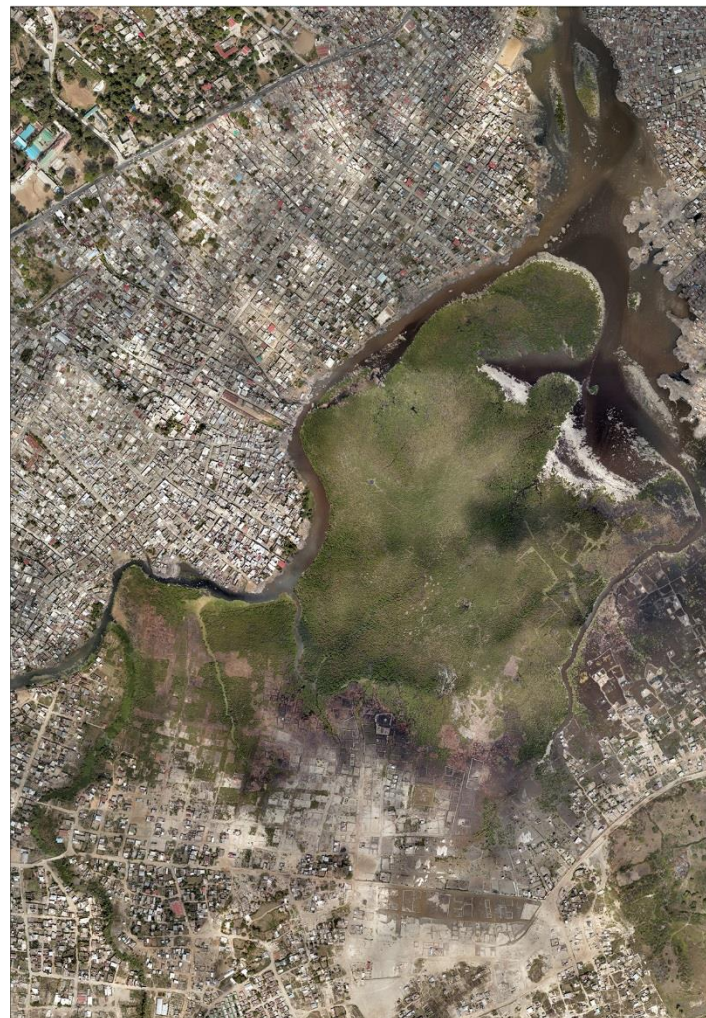
Cap-Haitien: Flood management context in Cap-Haitien

Cap-Haitien – Flood prone areas increasing due to sedimentation, urban encroachment and climate change



Cap-Haitien: Flood management context in Cap-Haitien

Cap-Haitien – Mangroves increasingly threatened by urban encroachment



Cap-Haitien: Flood management context

High flood risk zones (in red):
Bassin Rhodo and outlet to the sea and Ravines Belle Hôtesse and Zétriers

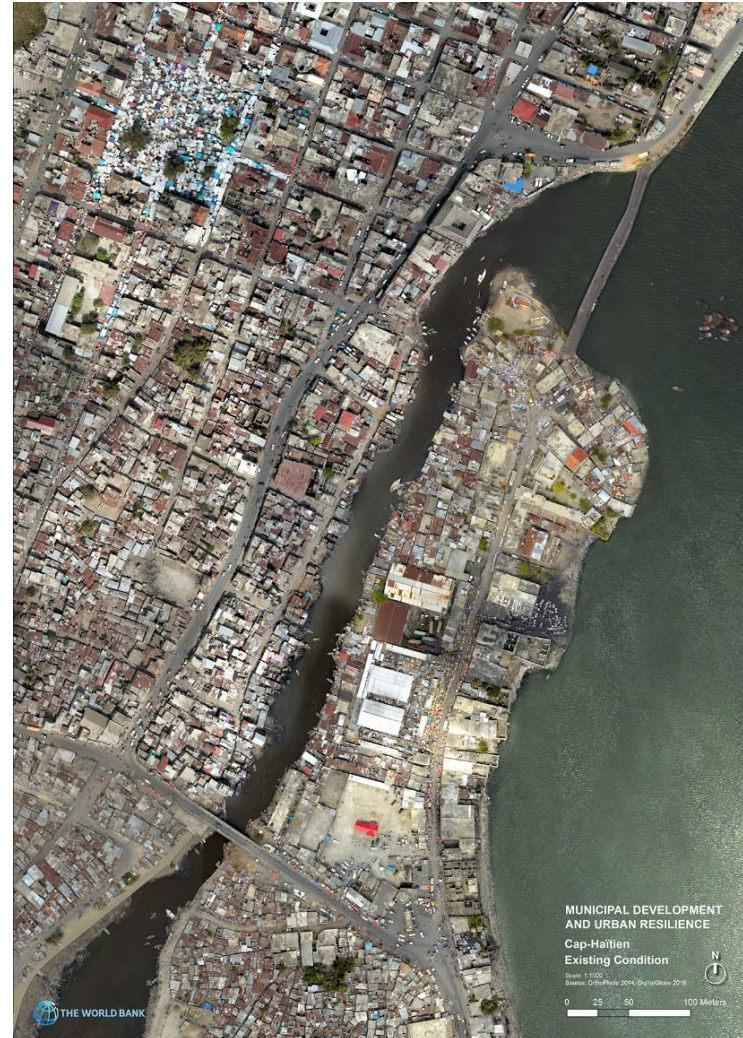


Cap-Haitien: Municipal Development and Urban Resilience Project



Cap-Haitien: Urban slum clearance in Bassin Rhodo outlet

- The initial plan:
The Bank is looking to conduct an urban slum clearance operation for flood prevention in a FCV country in the Caribbean. The initial plan is to resettle households in a 15-meter wide band on either side of a channel leading to the sea in order to allow for dredging of a channel with a width increased from 30 to 60 m.
- A Social risk assessment is carried out discreetly in the zone by CECI, a locally-based NGO with headquarters in Montreal.



Cap-Haitien: Urban slum clearance in Bassin Rhodo outlet

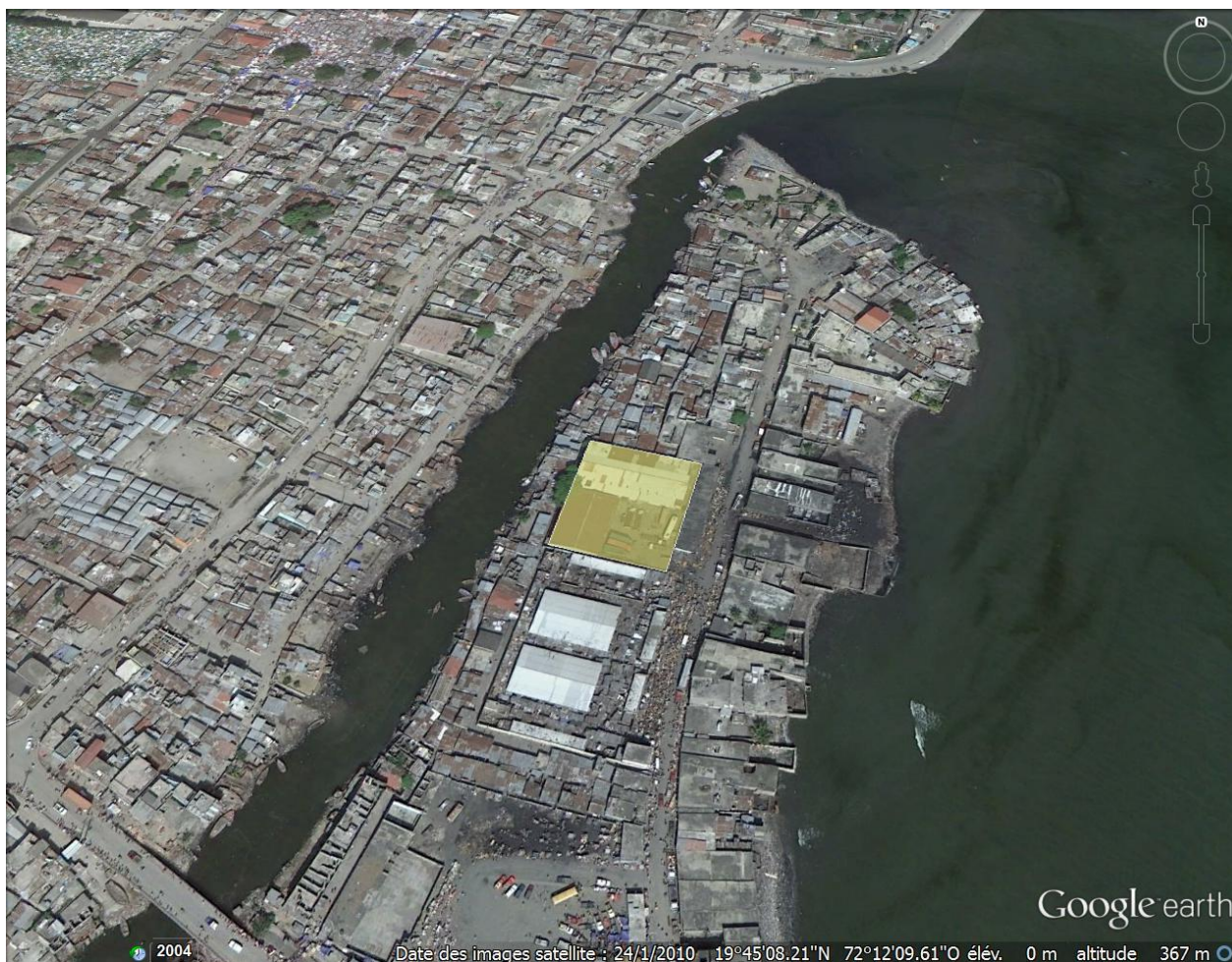
- Revised plan after Preliminary social risk assessment: The plan is to resettle households in a 15-meter wide band on the left side of the channel where social feasibility is greater, and to acquire an additional 10-meter wide band for conditional *in situ* resettlement. Resettlement on right side of channel is to be limited to 5 meters due to social challenges.



Cap-Haitien: Urban slum clearance in Bassin Rhodo outlet

Other options:

- 1) Use site of abandoned CARE warehouse on right side of canal (new option)
- 2) Relocate close to airport (7 km away)
- 3) Relocate close to new industrial park at Limonade (20 km away)



Cap-Haitien: Urban slum clearance in Bassin Rhodo outlet

Cap-Haitien –
View of outlet
from the sea



Cap-Haitien: Urban slum clearance in Bassin Rhodo outlet

Cap-Haitien –
View of outlet
from the sea



Cap-Haitien: Urban slum clearance in Bassin Rhodo outlet

Cap-Haitien – View of outlet



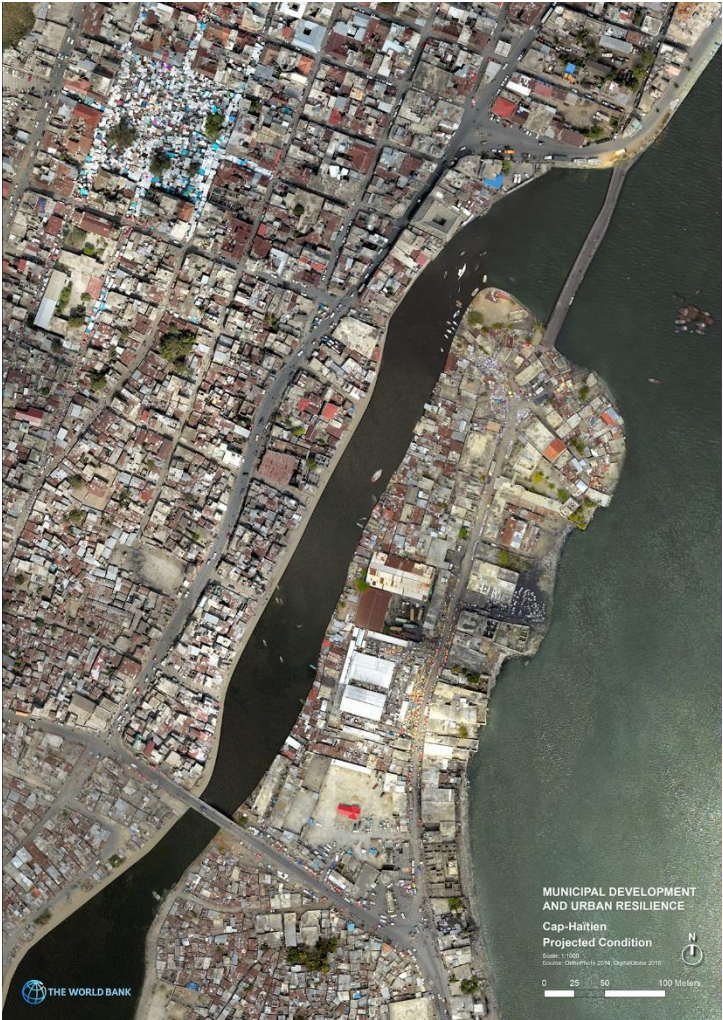
Cap-Haitien: Urban slum clearance in Bassin Rhodo outlet

Cap-Haitien –
View of outlet



Cap-Haitien: Urban slum clearance in Bassin Rhodo outlet

Planned profile of canal after the works



Concluding comments

- ❑ Urban slum clearance in Bassin Rhodo outlet is supported by local authorities and populations
- ❑ Resettlement surveys have been completed
- ❑ Resettlement planning still underway – requires further consultations and studies
- ❑ Preventive resettlement for disaster risk management in an FCV context is challenging and requires time and substantial resources
- ❑ Lessons learned from this project will likely inform other similar operations.

Thank you



WORLD BANK GROUP

Social, Urban, Rural & Resilience

